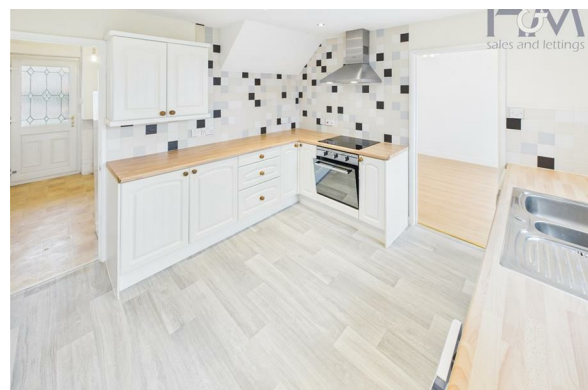
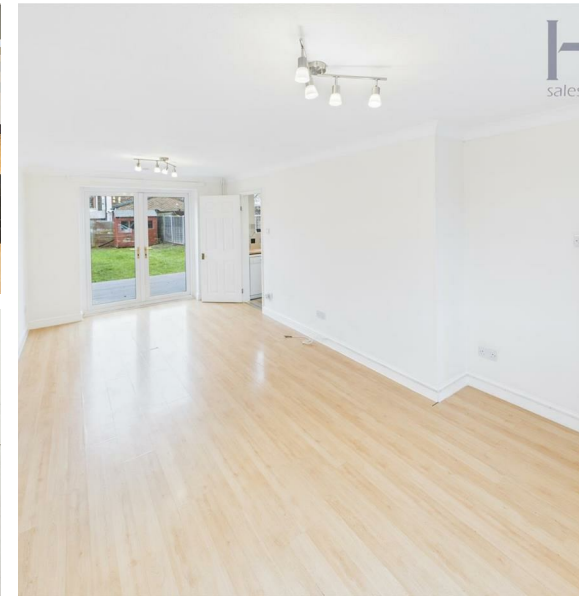


Bandley Rise, Stevenage, SG2 9ND

£1,650 PCM

H&M
sales and lettings



We are pleased to offer for rent this three bedroom family home located in the Shephall area of Stevenage. Accommodation comprises of entrance hall, dual aspect lounge, kitchen and store area. To the first floor there are three bedrooms and a family bathroom. Externally the house benefits from an enclosed rear. Pets are considered. Call today to book your viewing!



86 High Street
Stevenage
Hertfordshire
SG1 3DW
01438 728444

stevenage@homesandmortgages.co.uk



Floor 0



Floor 1

Approximate total area⁽¹⁾
820 ft²
76.2 m²

(1) Excluding balconies and terraces

Calculations reference the RICS IPMS 3C standard. Measurements are approximate and not to scale. This floor plan is intended for illustration only.

GIRAFFE360

Energy Efficiency Rating

	Current	Potential
Very energy efficient - lower running costs		
(92 plus) A		
(81-91) B		
(69-80) C		75
(55-68) D		
(39-54) E	54	
(21-38) F		
(1-20) G		
Not energy efficient - higher running costs		

England & Wales

EU Directive 2002/91/EC